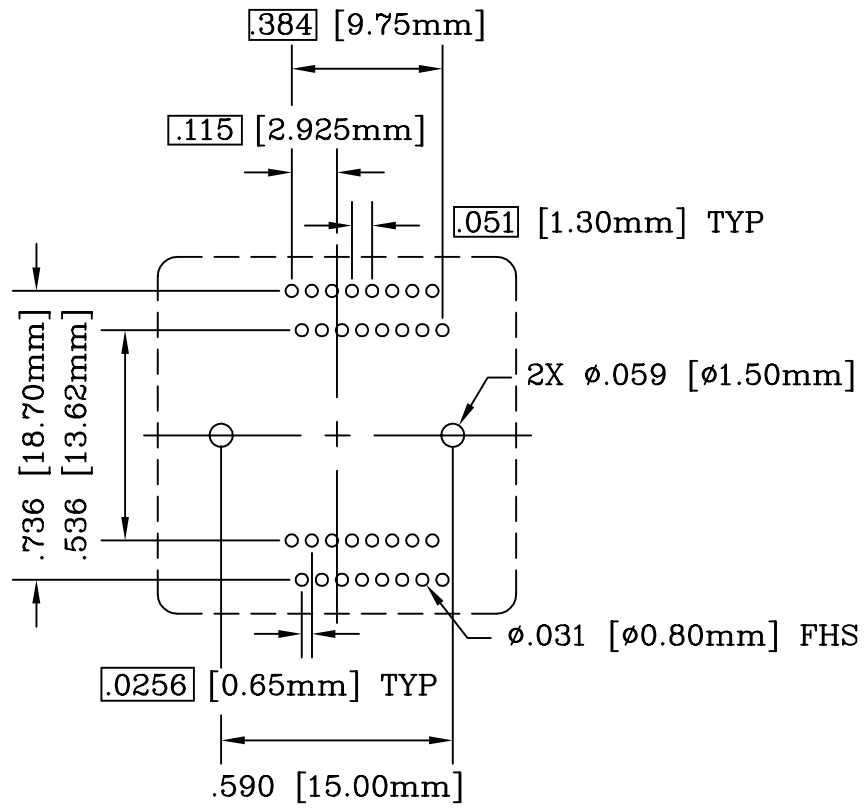
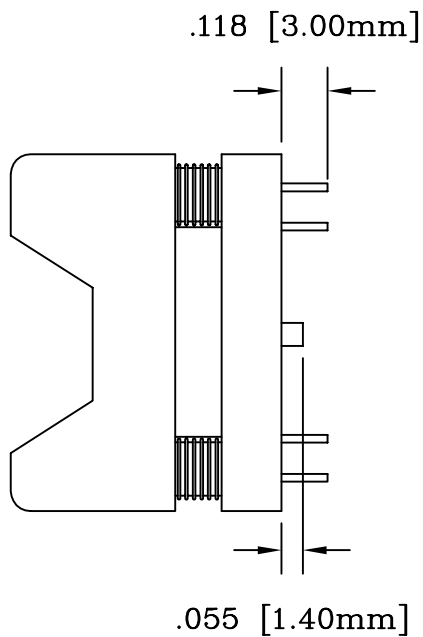
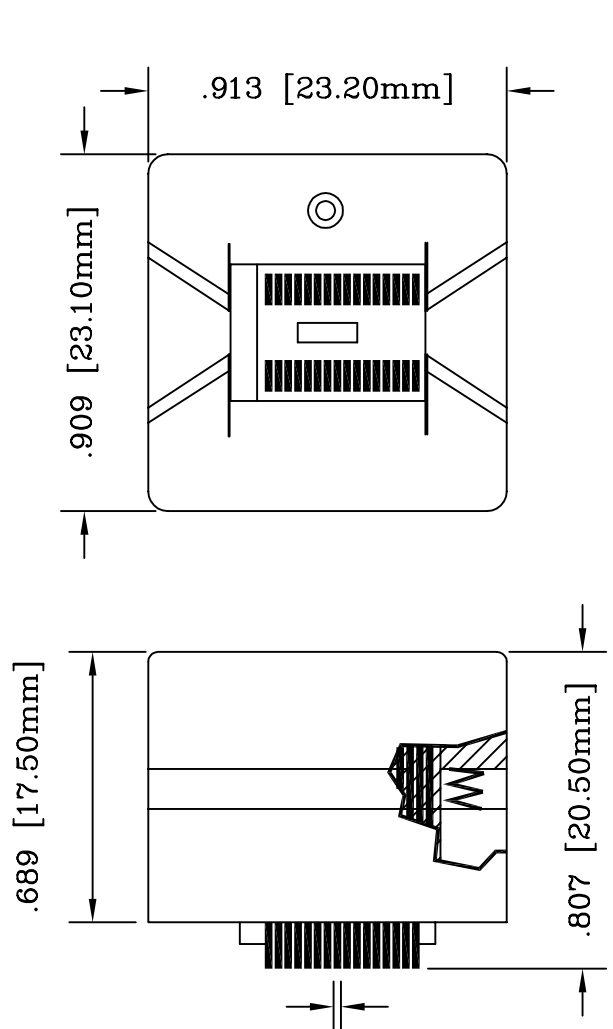


REV	DESCRIPTION	DATE	BY
A	NEW DRAWING	03/12/02	H.N.

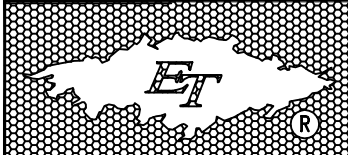
SKT1516
DOD 41516



CONTACT TAILS
.0118 [0.30mm] X
.0197 [0.50mm]

RECOMMENDED PCB LAYOUT
AS SEEN FROM TOP OF SOCKET

ALL DIMENSIONS ARE IN INCHES UNLESS OTHERWISE SPECIFIED



Emulation Technology, Inc.
— VLSI and SMT ADAPTERS and ACCESSORIES —
2344 Walsh Avenue, Bldg.F Santa Clara, Ca 95051
TEL:(408)982-0660 FAX:(408)982-0664

PACKAGE SPECIFICATIONS	
PIN COUNT	≡ 32
LEAD PITCH	≡ 0.65mm
PACKAGE SIZE	≡ 6.10mm
TIP TO TIP	≡ 8.10mm
ET PACKAGE CODE	≡ 32-SS05

SHEET: 1 OF 1	DATE: 03/12/02	REVISION: A	ASSEMBLY DRAWING
CHECKED: Perry Munroe	DRAWN: Huy Nguyen	ITEM: S-SS0-00-032-B	
Scale 2:1	DO NOT SCALE DRAWING	DESCRIPTION: S-SS0-00-032-B	