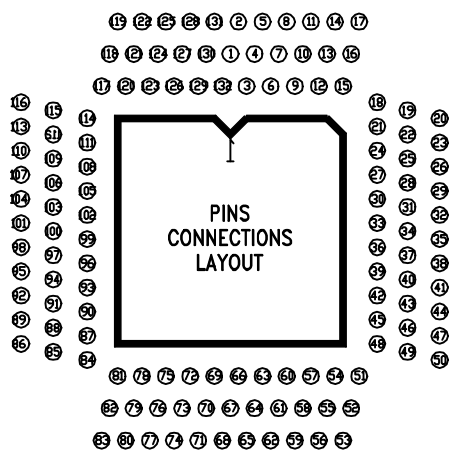
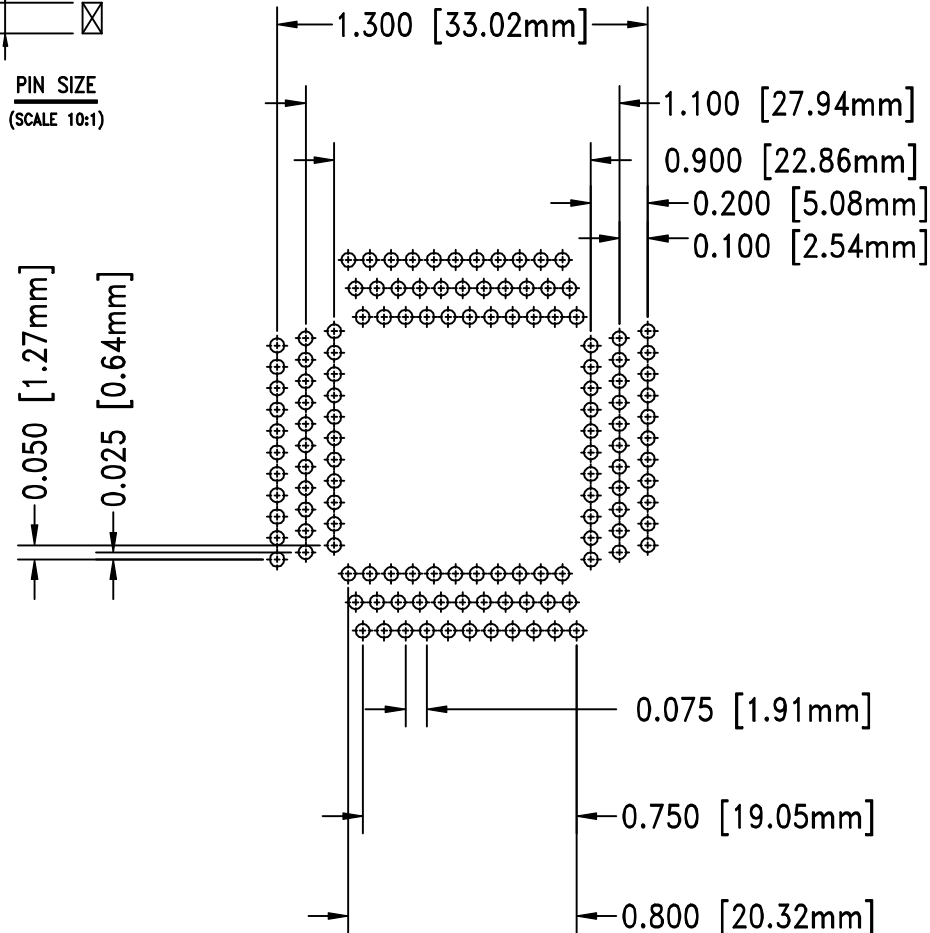
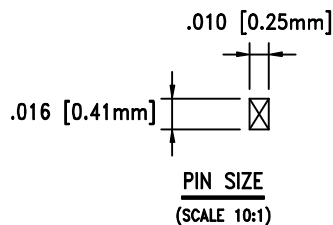
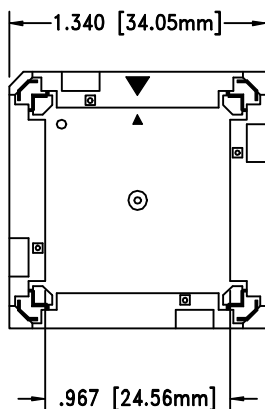


DIMENSIONS ARE IN INCHES[MILLIMETERS]


SKT033

DOD 4033



ET-PACKAGE CODE= 132-QF03

- LEAD COUNT= 132
- BODY SIZE= .950" SQ. [24.13mm]
- LEAD PITCH= .025" [.635mm]
- TIP TO TIP= 1.10" SQ. [27.94mm]

	<b>Emulation Technology, Inc.</b> — VLSI and SMT ADAPTERS and ACCESSORIES —	
	2344 Walsh Avenue, Bldg. F Santa Clara, Ca 95051	TEL:(408)982-0660 FAX:(408)982-0664
SHEET: 1 OF 1	DATE: 6-08-00	REVISION:
CHECKED: Paula Olson	DRAWN: Miguel Delgadillo	TEST & BURN IN SOCKET
DO NOT SCALE DRAWING		E.T. PART #: S-QFP-00-132-C ID CODE: S-QFP-00-132-C