



EMULATION TECHNOLOGY, INC.

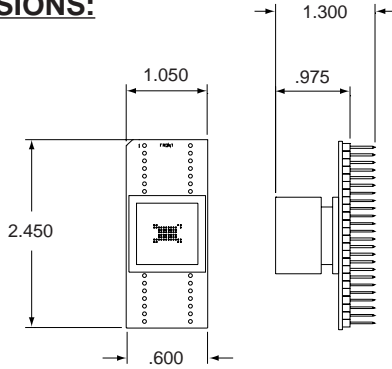
# PROGRAMMING ADAPTER SPECIFICATION

Item: 6348016BG600GNG  
Description: AS-63-48-01BG-6WEL-GANG

## REPLACEMENT SOCKET: S-MBG-12 X 8 63-A

Call Emulation Technology for a replacement socket price and delivery quote.

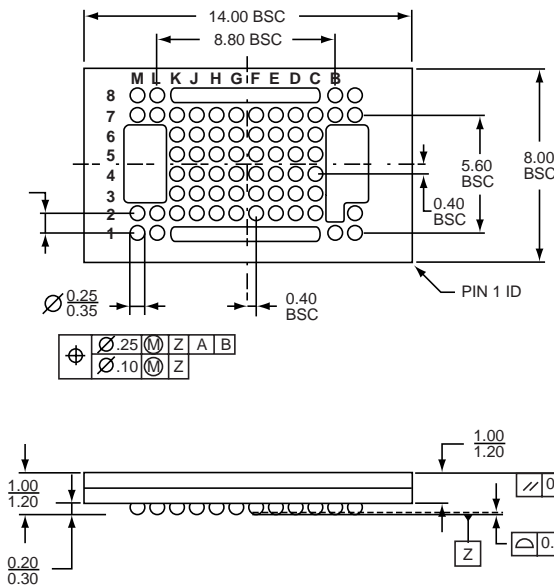
## TYPICAL DIMENSIONS:



All Dimensions in Inches.

(Assembly Drawing: F5631)

## PACKAGE SPECIFICATIONS:



All Dimensions in Millimeters.

## Notes:

1. This adapter plugs into 48 pin DIP ZIF socket
2. Orientation of index pin of 63 pin FBGA ZIF socket (pin A1)  
Orientation of index pin of 48 pin DIP ZIF socket (pin 1)
3. Place pads for SMD cap (1206 pkg) between pins J5 and K7

Compatible  $\mu$ BGA devices:  
29DL322C  
29LV033C

Manufacturers:  
AMD

## CONNECTION TABLE:

63-Pin FBGA SOCKET	PIN Names		48-Pin DIP Base
29DL322C/29LV033C			
K3	DAT1	DAT1	1
K4	DAT3	ADR21	2
J2	OE#	OE#	3
J3	DAT9	NC	4
H2	CE#	CE#	5
H3	DAT8	NC	6
H4	DAT10	DAT3	7
G2	ADR0	ADR0	8
G3	DAT0	DAT0	9
G4	DAT2	DAT2	10
G5	DAT5	DAT5	11
G6	DAT7	ADR19	12
G7	ADR16	ADR17	13
K2	VSS	VSS	14
H5	DAT12	NC	15
H6	DAT14	ADR10	16
J4	DAT11	VCC	17
H7	BYTE#	NC	18
J5	VCC	VCC	19
J6	DAT13	DAT6	20
J7	DA15/A-1	ADR20	21
K5	DAT4	DAT4	22
K6	DAT6	DAT7	23
K7	VSS	VSS	24
C7	ADR13	ADR14	25
C6	ADR9	ADR9	26
C5	WE#	WE#	27
D7	ADR12	ADR13	28
D6	ADR8	ADR8	29
D5	RESET#	RESET#	30
E7	ADR14	ADR15	31
E6	ADR10	ADR11	32
E5	NC	NC	33
F7	ADR15	ADR16	34
F6	ADR11	ADR12	35
F5	ADR19	NC	36
F4	ADR20	NC	37
F3	ADR5	ADR5	38
F2	ADR1	ADR1	39
E4	ADR18	NC	40
E3	ADR6	ADR6	41
E2	ADR2	ADR2	42
D4	WP#/ACC	ACC	43
D3	ADR17	ADR18	44
D2	ADR4	ADR4	45
C4	RY/BY#	RY/BY#	46
C3	ADR7	ADR7	47
C2	ADR3	ADR3	48

NC = No Connection



EMULATION TECHNOLOGY, INC.

2344 WALSH AVENUE • BUILDING F  
SANTA CLARA, CA 95051-1301  
TEL 408/982.0660 • FAX 408/982.0664

Call today for a FREE Full Line Catalog  
and Unlimited Application Consulting!