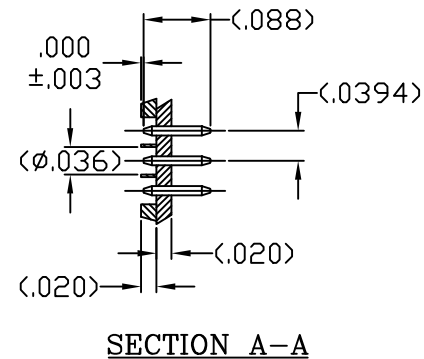
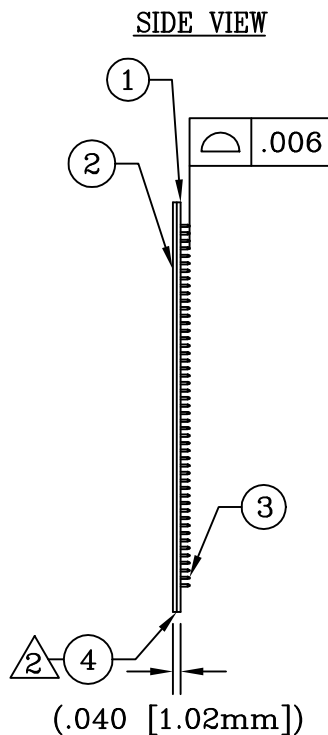
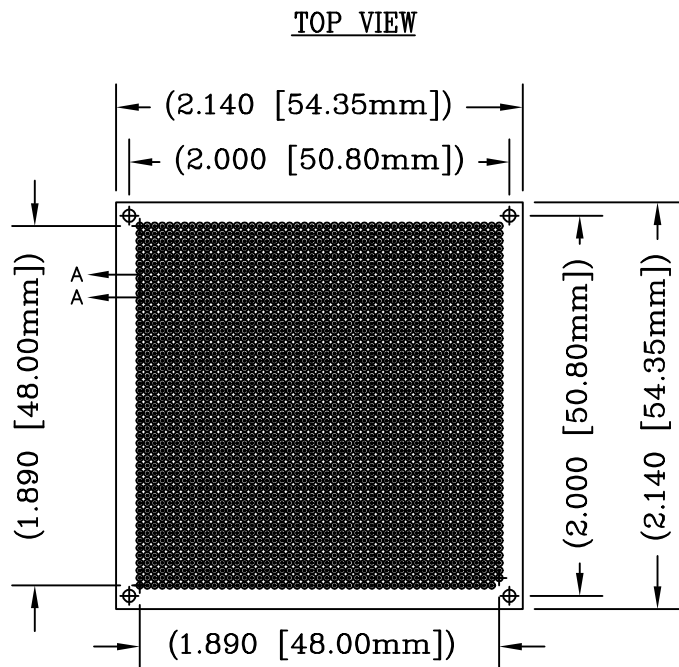


REV	DESCRIPTION	DATE	BY
A	NEW DRAWING	01/29/04	H.N.

F7219
DOD 37219



NOTES:

- ⚠ OUTSIDE EDGE; ITEM ④ MUST BE VISIBLE AT EDGE
EXCESS MUST BE TRIMMED. NO EVIDENCE OF ADHESIVE
INTRUSION INTO HOLES IS ALLOWED.

UNLESS OTHERWISE SPECIFIED:
DIMENSIONS ARE IN INCHES
TOLERANCES:
ANGLES: ±
FRACTIONS: ±1/64
DECIMALS:
.XX ±.010
.XXX ±.005
.XXXX ±.0005

ALL DIMENSIONS ARE IN INCHES UNLESS OTHERWISE SPECIFIED



Emulation Technology, Inc.

— VLSI and SMT ADAPTERS and ACCESSORIES —

2344 Walsh Avenue, Bldg.F TEL:(408)982-0660
Santa Clara, Ca 95051 FAX:(408)982-0664

SHEET: 1 OF 1	DATE: 01/29/01	REVISION: A	ASSEMBLY DRAWING
CHECKED: Perry Munroe	DRAWN: Huy Nguyen	ITEM: HLP-492400-B-00	DESCRIPTION: HLP-492400-B-00
Scale N/A	DO NOT SCALE DRAWING		