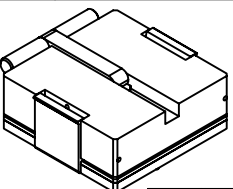
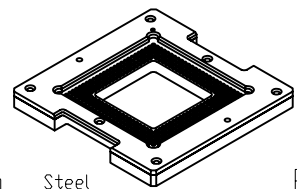
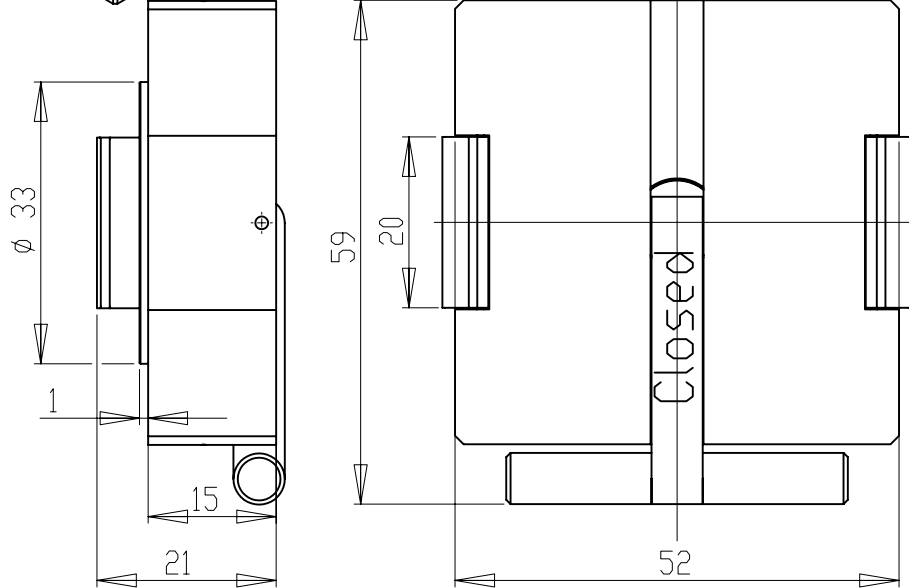


| REV | DESCRIPTION | DATE     | BY   |
|-----|-------------|----------|------|
| A   | NEW DRAWING | 03/21/07 | H.N. |

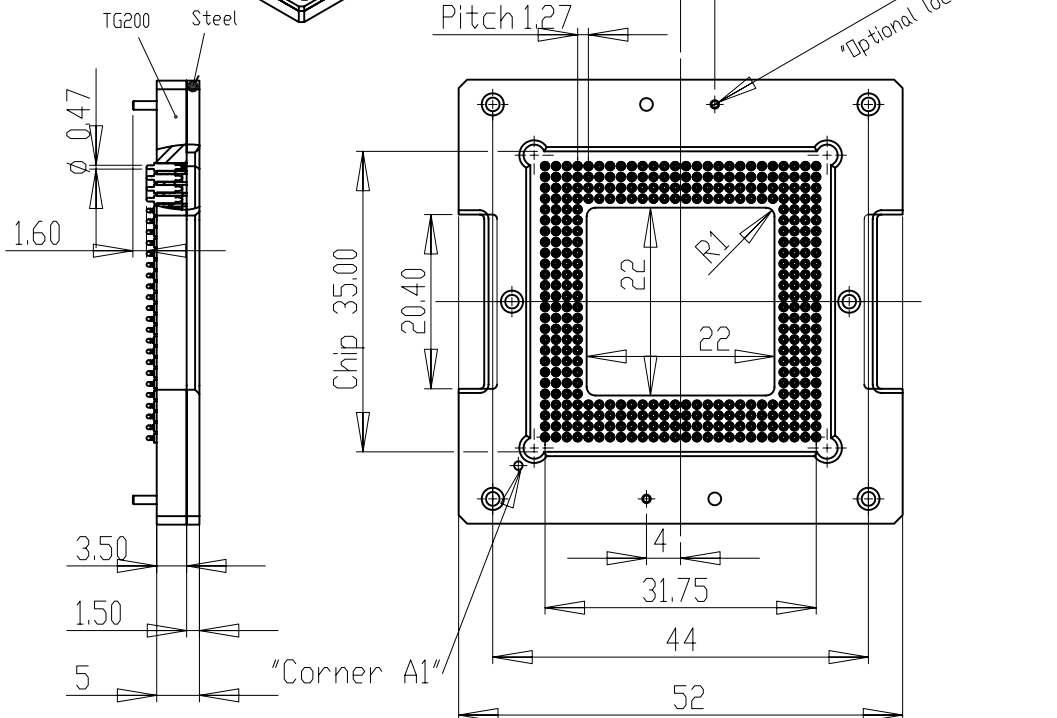
SKT2882



Retention frame  
Material: Epoxy FR4



Socket  
Material: TG 200 +Steel



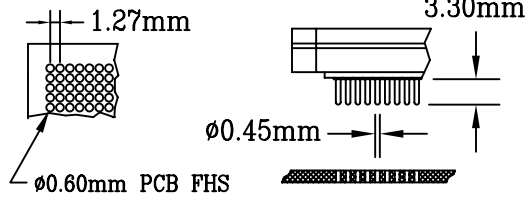
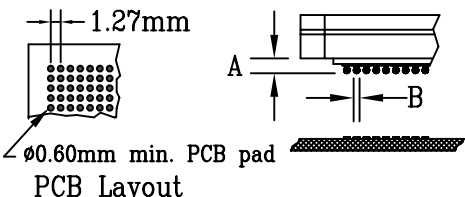
"Lid pressure adjustment is pre-set at the factory. Tampering with the setting may damage the socket and/or device and will invalidate your warranty."

PCB holes for locating pegs -  $\phi 1.10 \pm 0.02$   
Note: Locating pegs can also be soldered to PCB if plated-thru holes are provided

RECOMMENDED PAD LAYOUT

| SURFACE MOUNT STYLE |                  |
|---------------------|------------------|
| REGULAR SMT STYLE   | RAISED SMT STYLE |
| XX = SM             | XX = SR          |
| YY = 30             | YY = 29          |

| SOLDERTAIL = THRU HOLE STYLE |
|------------------------------|
| XX = ET                      |
| YY = 70                      |



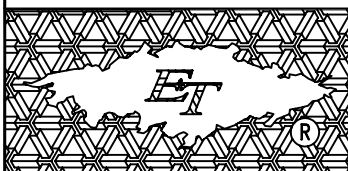
29= raised SMT: A = 5.00mm; B = 0.47mm  
30= standard SMT: A = 1.20mm; B = 0.47mm

PACKAGE SPECIFICATIONS

|              |               |
|--------------|---------------|
| PIN COUNT    | = 352         |
| LEAD PITCH   | = 1.27mm      |
| GRID SIZE    | = 26X26       |
| PACKAGE SIZE | = 35.00mm SQ  |
| IC BALL DIA  | = 1.00mm MAX. |
| BALL HEIGHT  | = 0.70mm MAX. |

UNLESS OTHERWISE SPECIFIED:  
DIMENSIONS ARE IN MILLIMETERS  
SURFACE FINISH:  
GENERAL TOLERANCES:  $\pm 0.10$   
LINEAR:  
ANGULAR:

ALL DIMENSIONS ARE IN MILLIMETERS UNLESS OTHERWISE SPECIFIED



**Emulation Technology, Inc.**  
— VLSI and SMT ADAPTERS and ACCESSORIES —

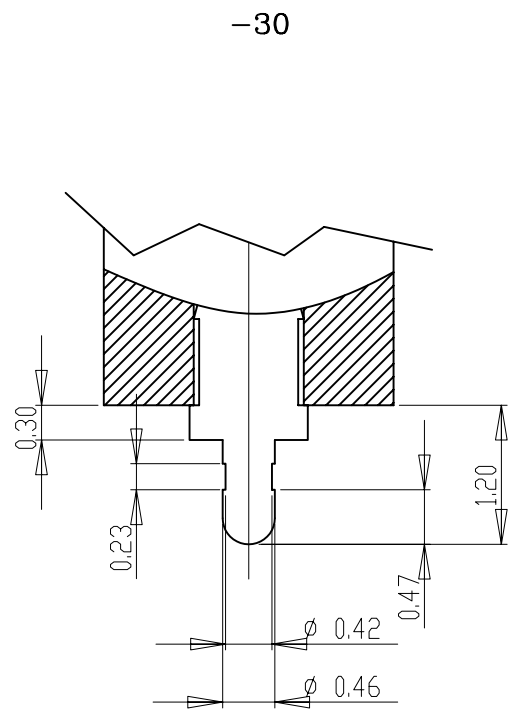
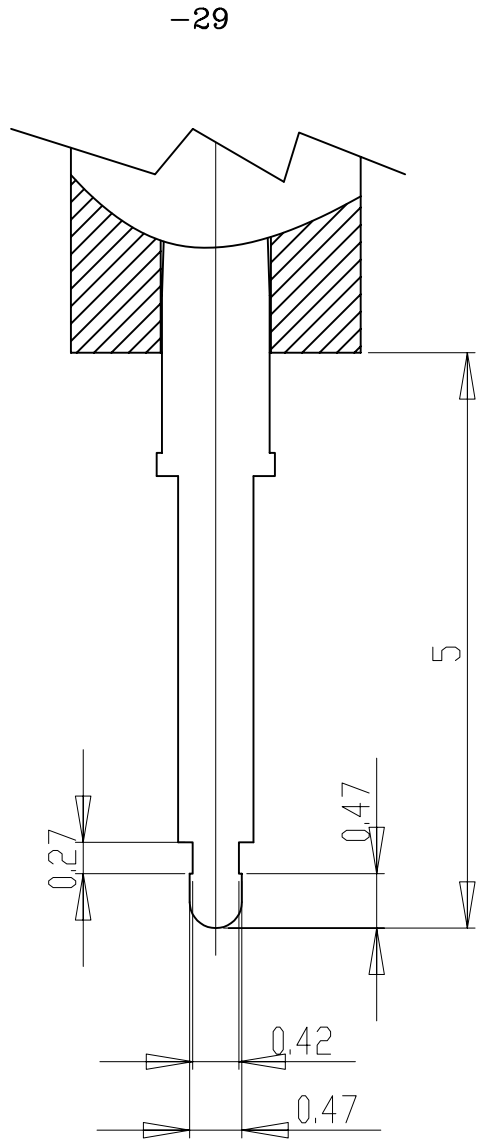
2344 Walsh Avenue, Bldg.F  
Santa Clara, Ca 95051  
TEL:(408)982-0660  
FAX:(408)982-0664

|                  |                   |                          |                                   |
|------------------|-------------------|--------------------------|-----------------------------------|
| SHEET:<br>1 OF 1 | DATE:<br>03/21/07 | REVISION:<br>A           | <b>ASSEMBLY DRAWING</b>           |
| CHECKED:         | DRAWN:<br>H.N.    | ITEM:<br>S-BGQ-26-352-XX |                                   |
| Scale N/A        |                   |                          | DESCRIPTION:<br>BPQ-352-2BG026-YY |

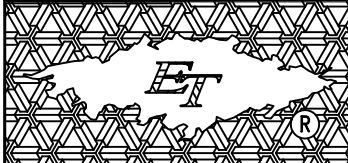
All Dimensions Are Nominal For A 1.27mm Pitch BGA Package

| REV | DESCRIPTION | DATE     | BY   |
|-----|-------------|----------|------|
| A   | NEW DRAWING | 06/28/06 | H.N. |

ET-1.27mm



ALL DIMENSIONS ARE IN MILLIMETERS UNLESS OTHERWISE SPECIFIED



**Emulation Technology, Inc.**  
 — VLSI and SMT ADAPTERS and ACCESSORIES —  
 2344 Walsh Avenue, Bldg.F Santa Clara, Ca 95051  
 TEL:(408)982-0660 FAX:(408)982-0664

|                          |                      |                |                                  |
|--------------------------|----------------------|----------------|----------------------------------|
| SHEET:<br>1 OF 1         | DATE:<br>06/28/06    | REVISION:<br>A | <b>ASSEMBLY DRAWING</b>          |
| CHECKED:<br>Perry Munroe | DRAWN:<br>Huy Nguyen |                | ITEM:<br>1.27mm PITCH PIN        |
| Scale N/A                | DO NOT SCALE DRAWING |                | DESCRIPTION:<br>1.27mm PITCH PIN |